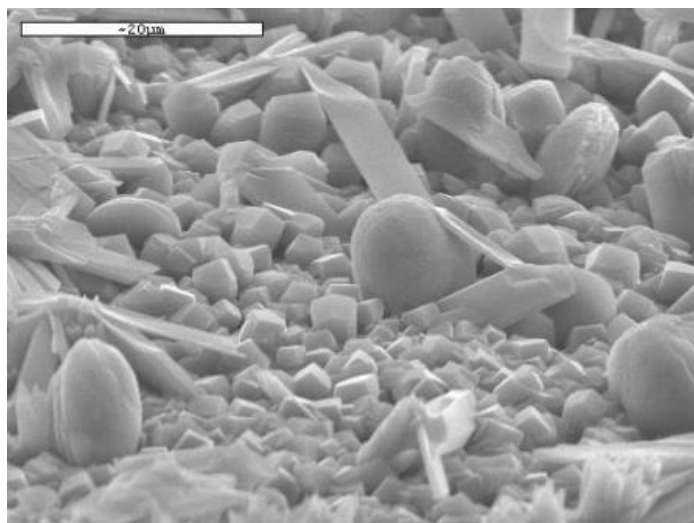


The [Natural Resources and Renewable Energies Laboratory \(NRRE\)](#) is one of the founding research units of CPERI, established in 1985.

Technological targets of applied and basic research at NRRE include development and optimization of :

- ***Advanced processes for desalination, potable water purification, waste-water treatment and reuse;*** membrane and hybrid membrane – advanced oxidation processes.
- ***Novel membrane processes for a broad spectrum of industrial separations;*** i.e., removal of pollutants from effluents, and recovery of valuable products from agricultural residues and industrial byproducts.
- ***Tools for assessment and mitigation of environmental pollution and its effects,*** focused on human health impact and related monitoring.
- ***Methods for utilization of renewable energies,*** including *geothermal energy* exploitation, as well as *solar energy* utilization for water treatment and desalination.
- ***Multi-phase processes,*** including packed beds, heat exchangers, separation, flocculation and dispersion equipment



□□□□□□

Initial stage of crystalline deposit formation on RO membranes